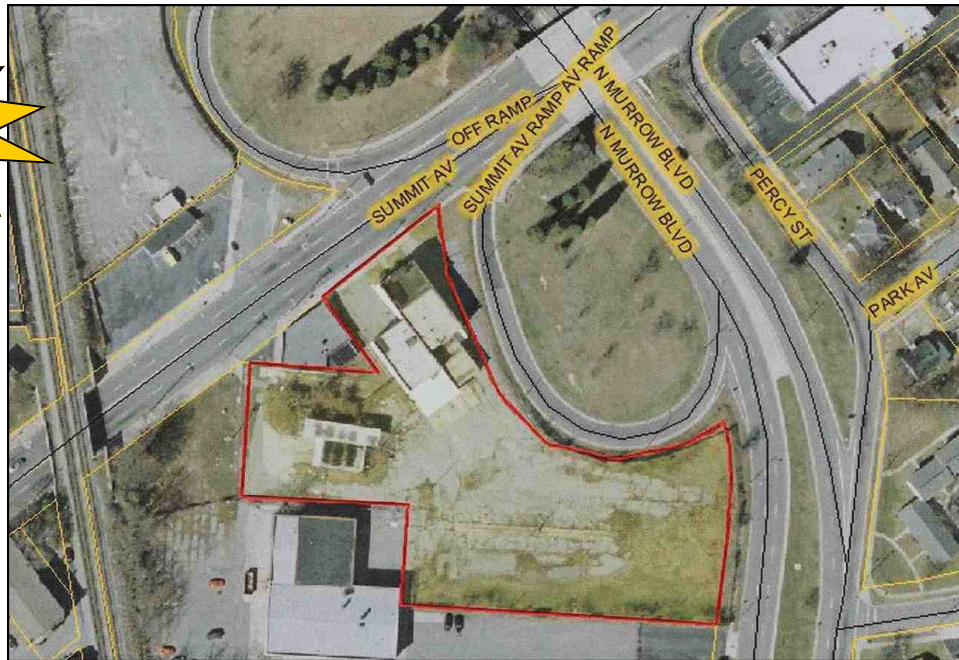


LAND FOR SALE

410 Summit Avenue, Greensboro, NC

2.15 +/- acres
Zoned CB



Features:

- 2.15 +/- acres in downtown Greensboro
- Zoning: Central Business
- Topo: Level
- Adjacent to proposed Urban Greenway

Directions:

North on Elm Street; right onto Lindsay Street; left onto Summit Avenue; go under bridge and land is on the right.

Sales Price:

\$820,000

Description:

Rare opportunity to purchase 2.15 acres in the Central Business District. Great exposure on Summit Avenue and Murrow Blvd. Additional 6.24 acres available for purchase adjacent to site.

Brown Investment Properties specializes in Commercial Sales & Leasing, Property Management, Development, Apartments, Office, Industrial, Flex, Retail, and Land

The statements and figures herein while not guaranteed are secured from sources believed to be authoritative. This offering is subject to change of price, prior lease or sale and or withdrawal without notice. Prospects should verify all information